
Setting up Citrix XenServer for 2X VirtualDesktopServer Manual



2X Software Ltd.





URL: www.2x.com
E-mail: info@2x.com

Information in this document is subject to change without notice. Companies, names, and data used in examples herein are fictitious unless otherwise noted. No part of this document may be reproduced or transmitted in any form or by any means, electronic or mechanical, for any purpose, without the express written permission of 2X SOFTWARE Ltd.

2X VirtualDesktopServer is copyright of 2X SOFTWARE Ltd. © 1999-2009 2X SOFTWARE Ltd. All rights reserved.

Version 1.5 – Last updated August 21, 2009

Contents

- Preparing Citrix XenServer for 2X VirtualDesktopServer 4**
 - 2X VDI Agent System requirements..... 4
 - Setting up the 2X VDI Agent Appliance for Citrix XenServer 5
- Configuring 2X VirtualDesktopServer to use Citrix XenServer Guests 6**
 - Adding a Virtual Desktop Host 6
 - Add a Virtual Host..... 7
 - Check Agent10
 - Publish a Virtual Desktop10
 - Publish Virtual Desktops11
- Using 2X Client with Citrix XenServer 15**

PREPARING CITRIX XENSERVER FOR 2X VIRTUALDESKTOPSERVER

2X VDI Agent System requirements

Citrix XenServer

Before continuing to set up your environment, please make sure that your XenCenter can connect to your Citrix XenServer.

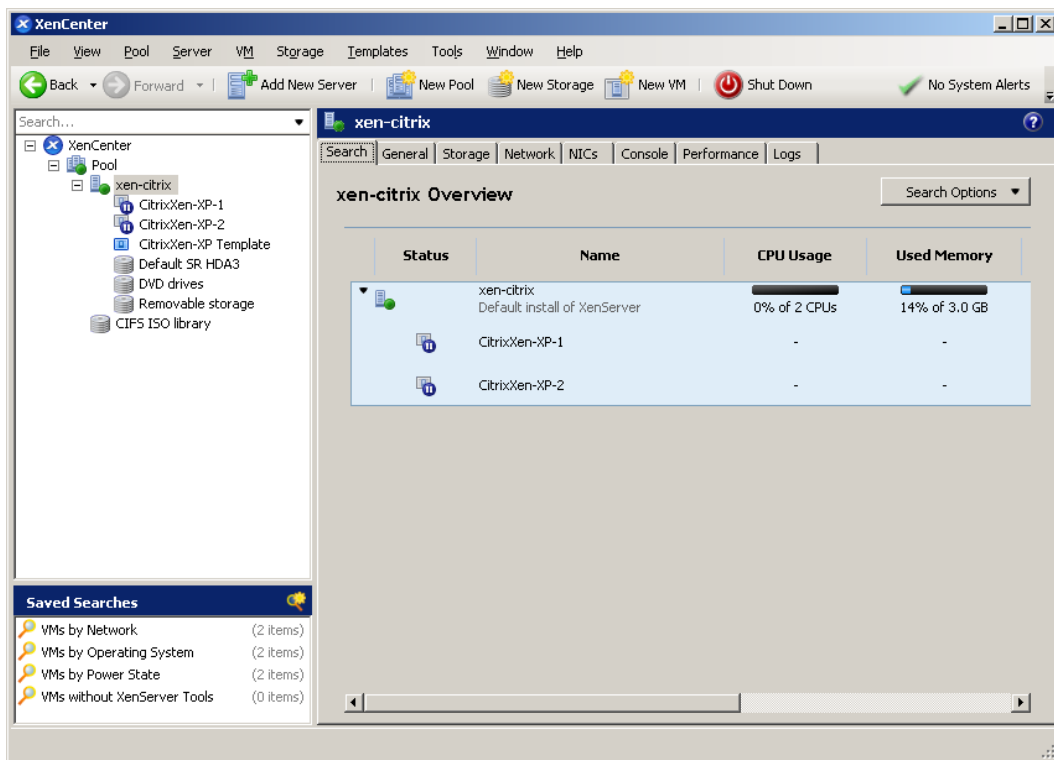


Figure 1: XenCenter

A guest operating system (like Windows XP/Vista) must be created on the Citrix XenServer which features an RDP server.

Important:

Ideally, the guest name should be equal to the computer name.
Please install XenServer tools on the guest OS.

After the guest OS installation is complete make sure that the RDP server is started. To confirm that the server is running, launch a Remote Desktop Client and connect to the guest operating system using the computer name (of the guest OS) and the RDP port (default RDP port is 3389).

Setting up the 2X VDI Agent Appliance for Citrix XenServer

Citrix XenServer Appliance can be downloaded ([Citrix XenServer VDI Agent Appliance](#)) from the [2X VirtualDesktopServer downloads page](#).

Once the 2X VDI Agent Appliance for Citrix XenServer is downloaded it must be installed on a server. To install the Appliance:

1. Extract the ZIP file contents into a temporary directory.
2. Open XenCenter.
3. Right click on host and choose "Import VM".
4. Choose the XVA file extracted from step 1.
5. Choose the desired pool (or accept default) and click 'Next'.
6. Choose the storage location (or accept default) and click 'Next'.
7. Configure the network settings (or accept defaults) and click 'Next'.
8. Click 'Finish' and wait for the import job to complete.

The root password of the 2X VDI Agent Appliance is 'vdiagent'.

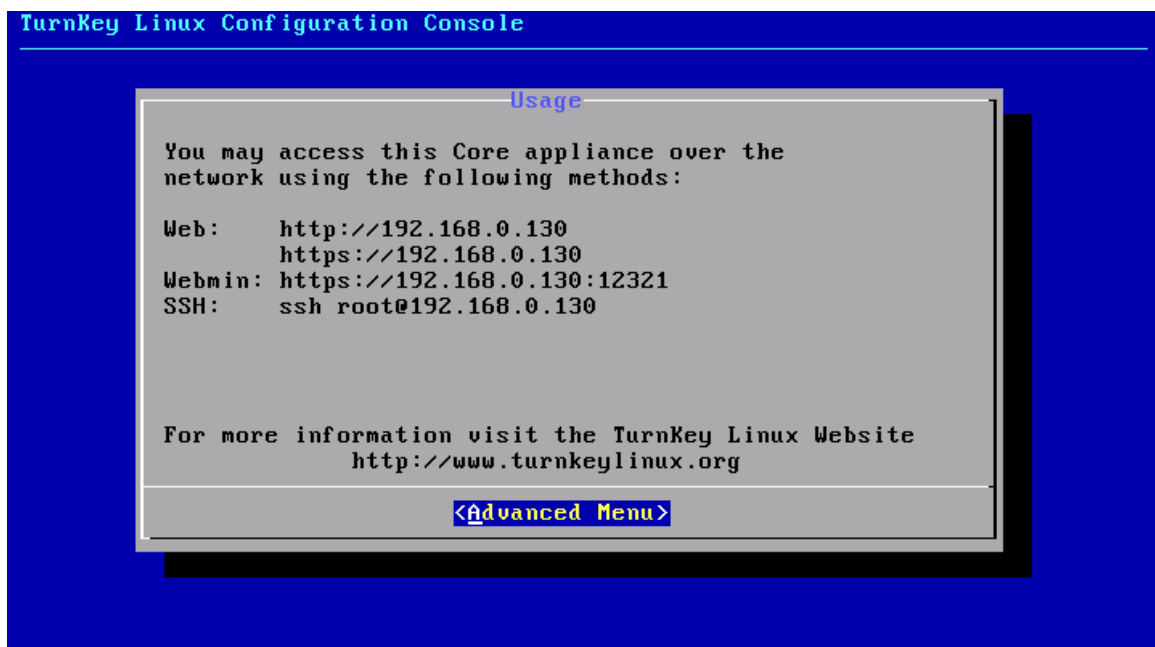


Figure 2 - Citrix XenServer VDI Agent Appliance

CONFIGURING 2X VIRTUALDESKTOPSERVER TO USE CITRIX XENSERVER GUESTS

Adding a Virtual Desktop Host

You can add several Virtual Desktop Hosts to your farm that can be used to publish virtual desktops.

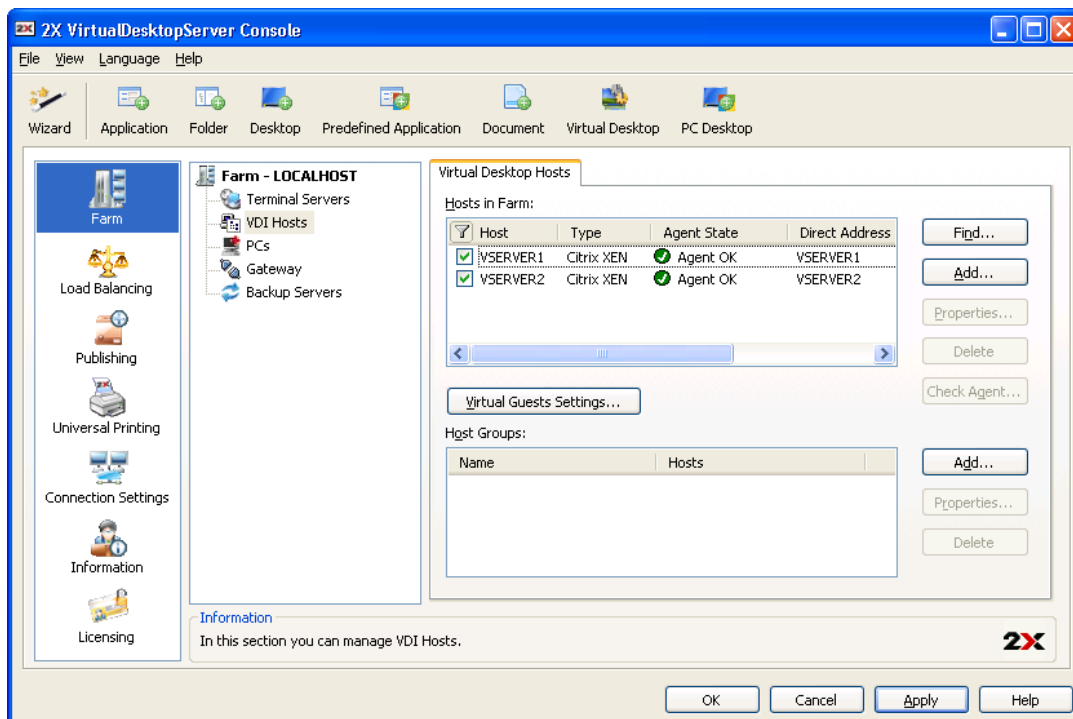


Figure 3 - Add VDI Hosts to the farm

NOTE: The checkbox next to the server name indicates the particular server is available to users on this farm. To disable a server temporarily, uncheck this checkbox.

Add a Virtual Host

To manually **add** a Host to your farm click the 'Add...' button and then choose a 'VDI Type' and enter the Host name or IP address in the 'VDI Host:' field as shown in the figure below.

The 'VDI Agent' property should point to the Appliance.

Click 'Next' to continue.

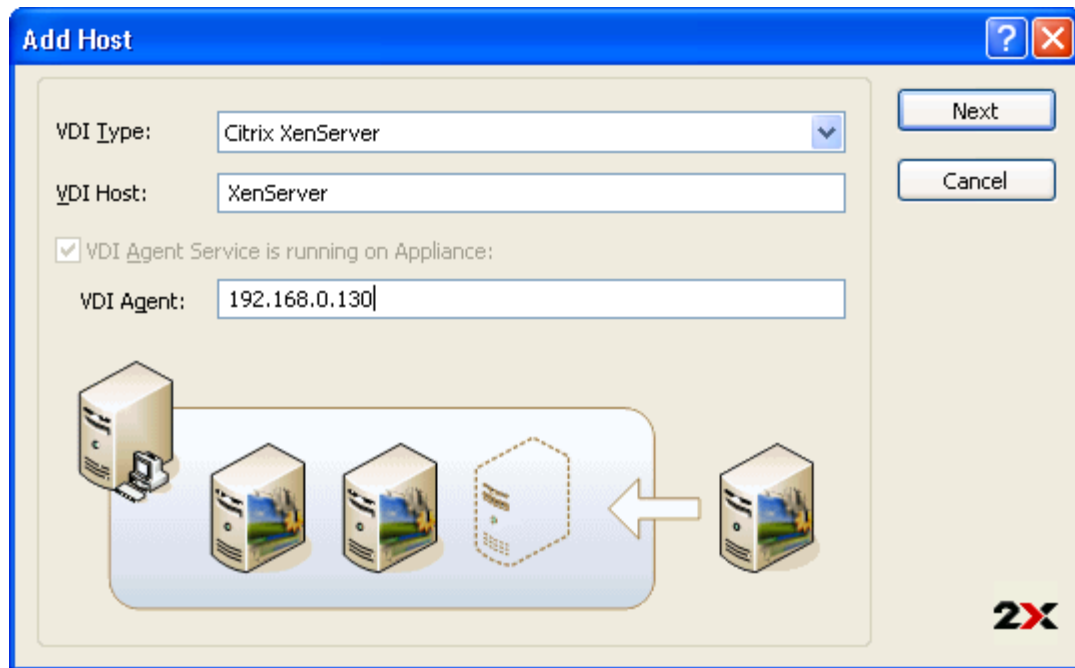


Figure 4 - Manually add a new Host

2X VirtualDesktopServer will check whether 2X VDI Agent is installed. Check the status and if the status states that the Agent did not reply or the service is not installed, click the '**Install...**' button to install 2X VDI Agent.

Click 'Next' if the status states that the Agent is already installed.

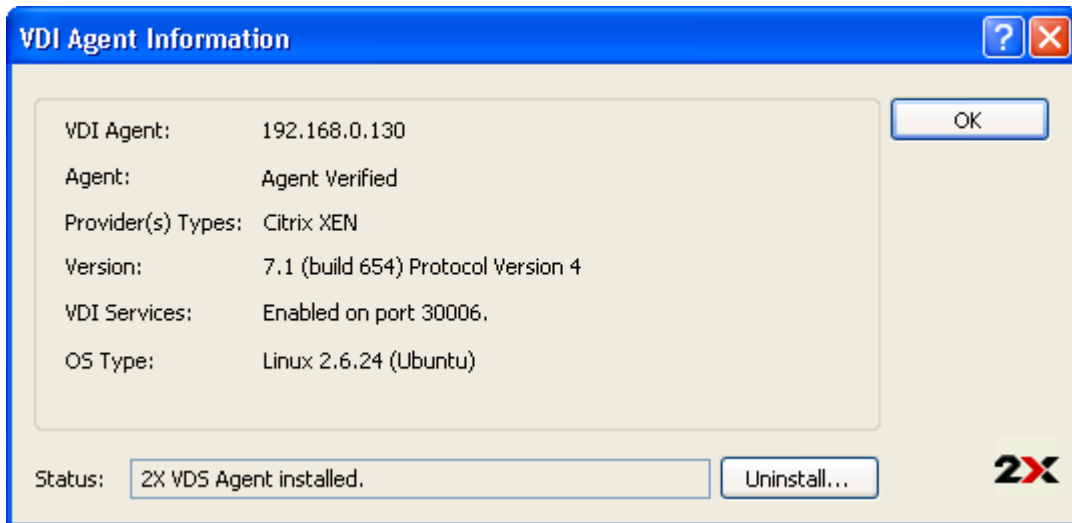


Figure 5 - VDI Agent Information

Host Properties

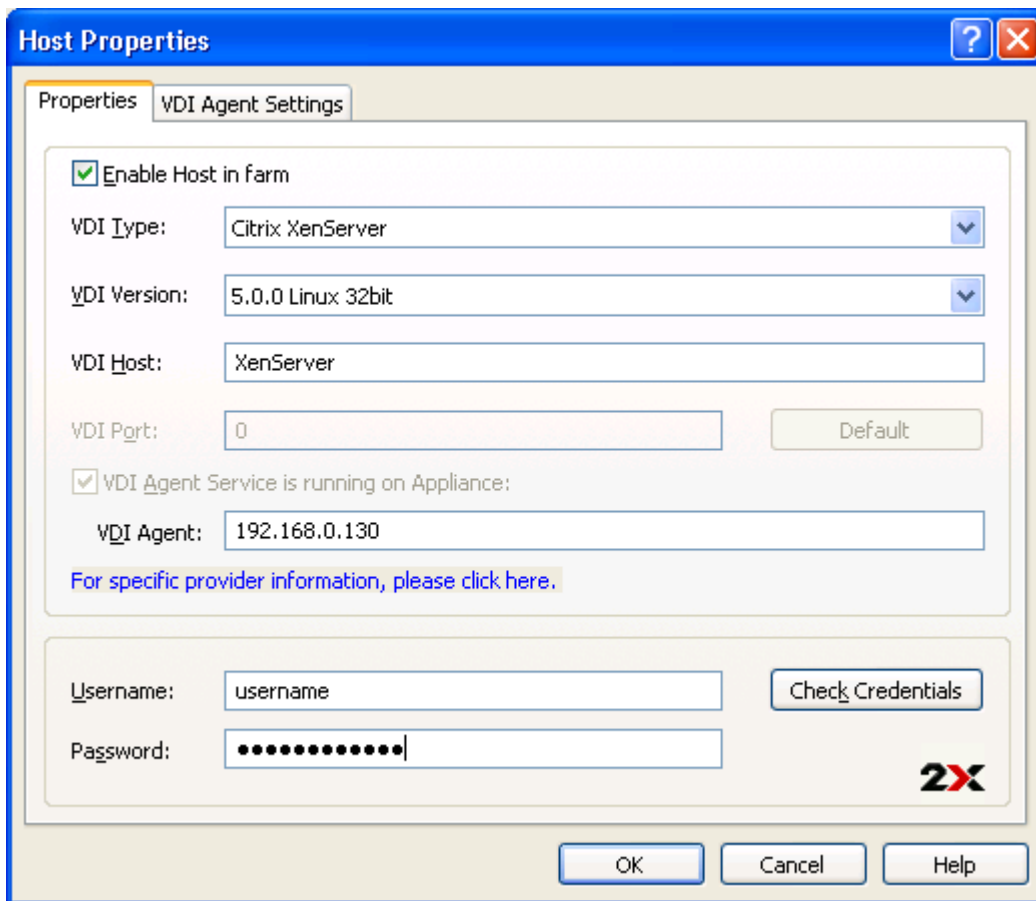


Figure 6 - Configure each Host properties

To enable this host in the farm, make sure that the 'Enable Host in farm' checkbox is checked.

Select the VDI provider of the host from the 'VDI Type' field and the version that you are using from the 'VDI Version' field. To change the Host name or IP address of a particular VDI host, use the 'VDI Host' field.

Appliance settings should be enabled to connect to your Citrix XenServer. The 'VDI Agent' property should point to the Appliance.

To start using the new host, please enter the username and password of the host. Click on 'Check Credentials' if you would like to test the username and password before clicking 'OK'.

VDI Agent Settings

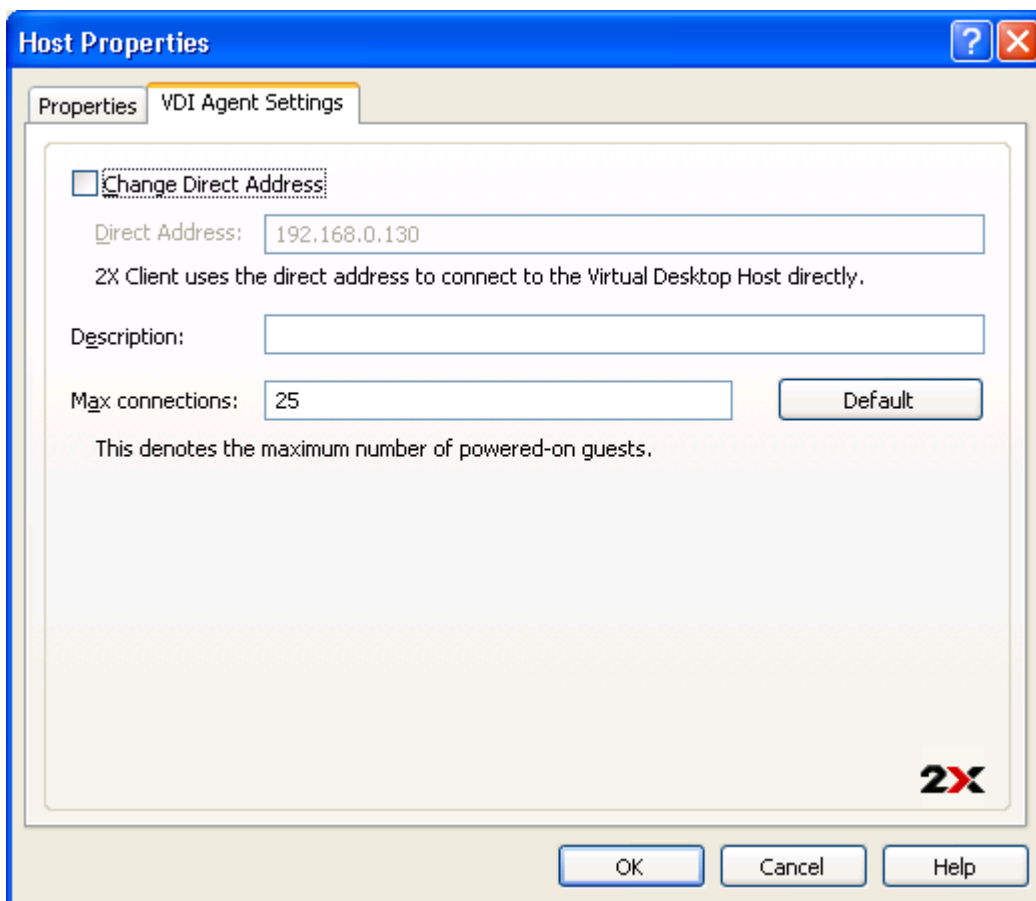


Figure 7 - Configure the VDI Agent Settings

You can configure the direct address by checking the 'Change Direct Address' checkbox and type a new direct address. This address is used in Direct Connection mode only

(this is an internal or external IP address) depending on where the clients will be. If external, the IP addresses must be assigned at your firewall to your servers).

A 'Description' can be given to the host which can be used to easily identify different server from one another.

Next you can type the maximum number of powered-on guests you want this host to accept.

Check Agent

Once you have finished adding your Virtual Desktop Hosts select a Virtual Desktop Host (one at a time) and click the '**Check Agent**' button. If the 2X Publishing Agent can communicate with the 2X VDI Agent running on the Host, you will receive this message:

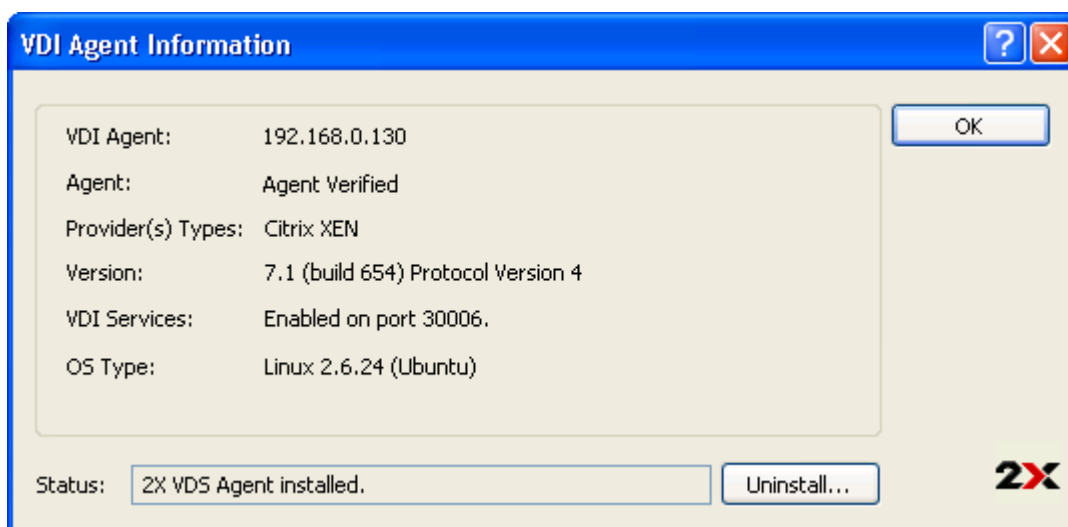


Figure 8 - 2X VDI Agent verified by 'Check Agent'

NOTE: Make sure that 2X VDI Agent is installed on each Virtual Desktop Host added to the farm. 2X VDI Agent collects the information required by 2X Publishing Agent to be able to load balance each session according to available resources.

Publish a Virtual Desktop

To start publishing the applications, select 'Publishing' from the Navigation bar and click the '**Add...**' button from the Publishing tools.



Publish Virtual Desktops

To publish a virtual desktop with the wizard, click on 'Publishing' in the Navigation bar and click 'Add...'. From the 'Select Type' dialog choose 'Virtual Desktop' (Publish a Virtual Desktop).

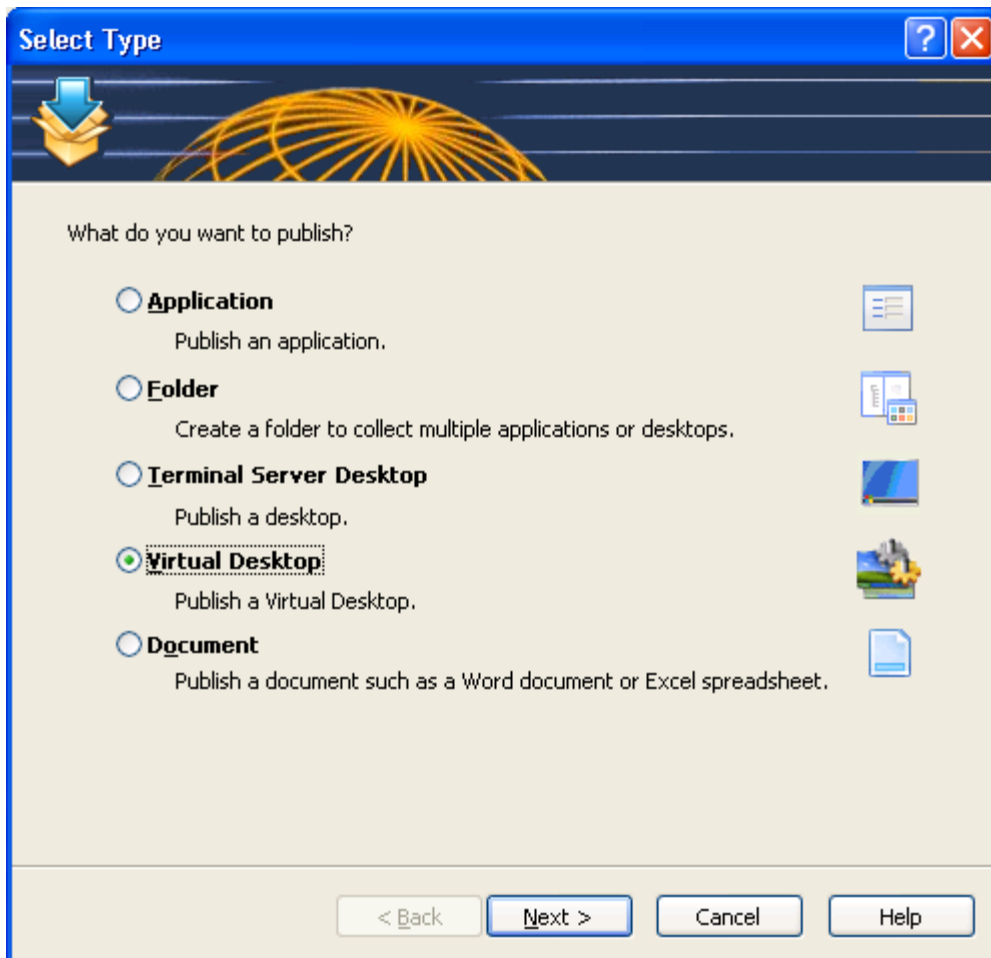


Figure 9: Select Virtual Desktop as the Type

NOTE: If only one server is listed in the Virtual Desktops Hosts list, the wizard will skip the 'Publish From' dialog and continue with the 'Application Settings' dialog.

In the 'Publish From' dialog as seen in the below figure you can choose from which Virtual Desktop Host/s you want to publish the virtual desktop. You can choose to publish the virtual desktop from 'All Server in Farm', from Server Groups or from Individual Hosts.

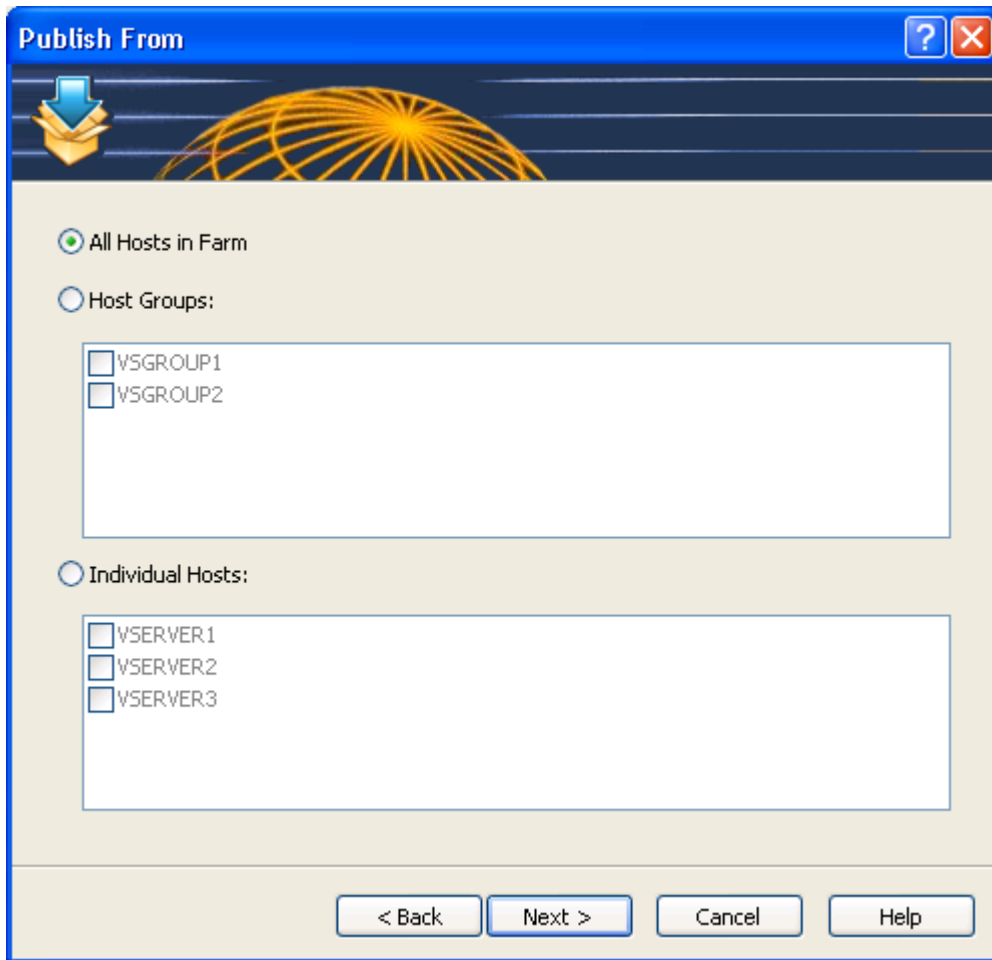


Figure 10: Choose from which Virtual Hosts you want to publish the application

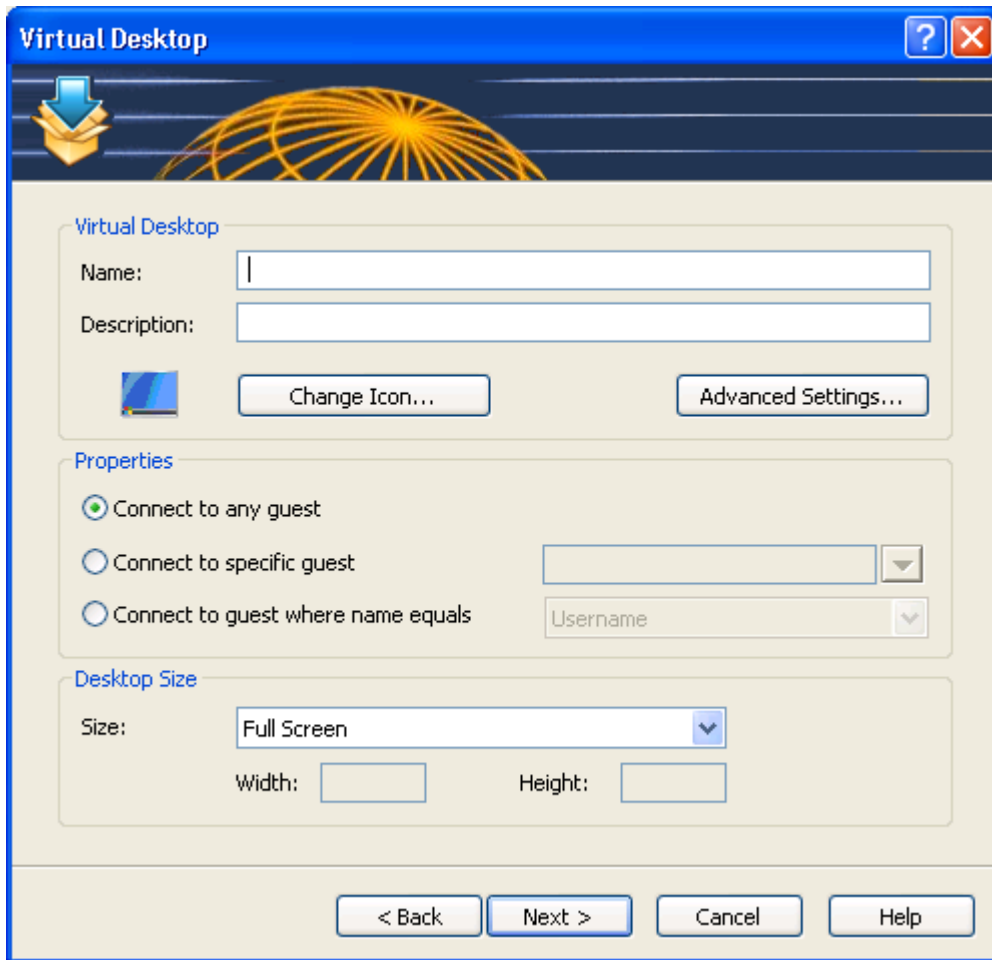


Figure 11 - Virtual Desktop Settings

Virtual Desktop

In this dialog you can type the Desktop Name and a Description for the published desktop. From this dialog you may also change the icon for the published desktop.

Properties

There are 3 different properties which can be used by the Virtual Desktop. 'Connect to any guest' will load any virtual desktop published to any user that logs in. 'Connect to specific guest' will load the virtual desktop selected to every user. 'Connect to a guest where name equals' will loads the virtual desktop to users who's user name is the same as that of the virtual desktop or to users which are using a machine that has an IP address equal to the virtual desktop's name.

Desktop Size

Choose, from the drop down list, the resolution you would like to use. Choose 'Custom' to be able to enter your own resolution.

Click '**Finish**' to finalize the wizard, and the application you've just configured will be generated in the 'Published Applications Explorer' area. Now you can re-configure the options by using the tabs in the 'Published Applications Properties' area.

USING 2X CLIENT WITH CITRIX XENSERVER

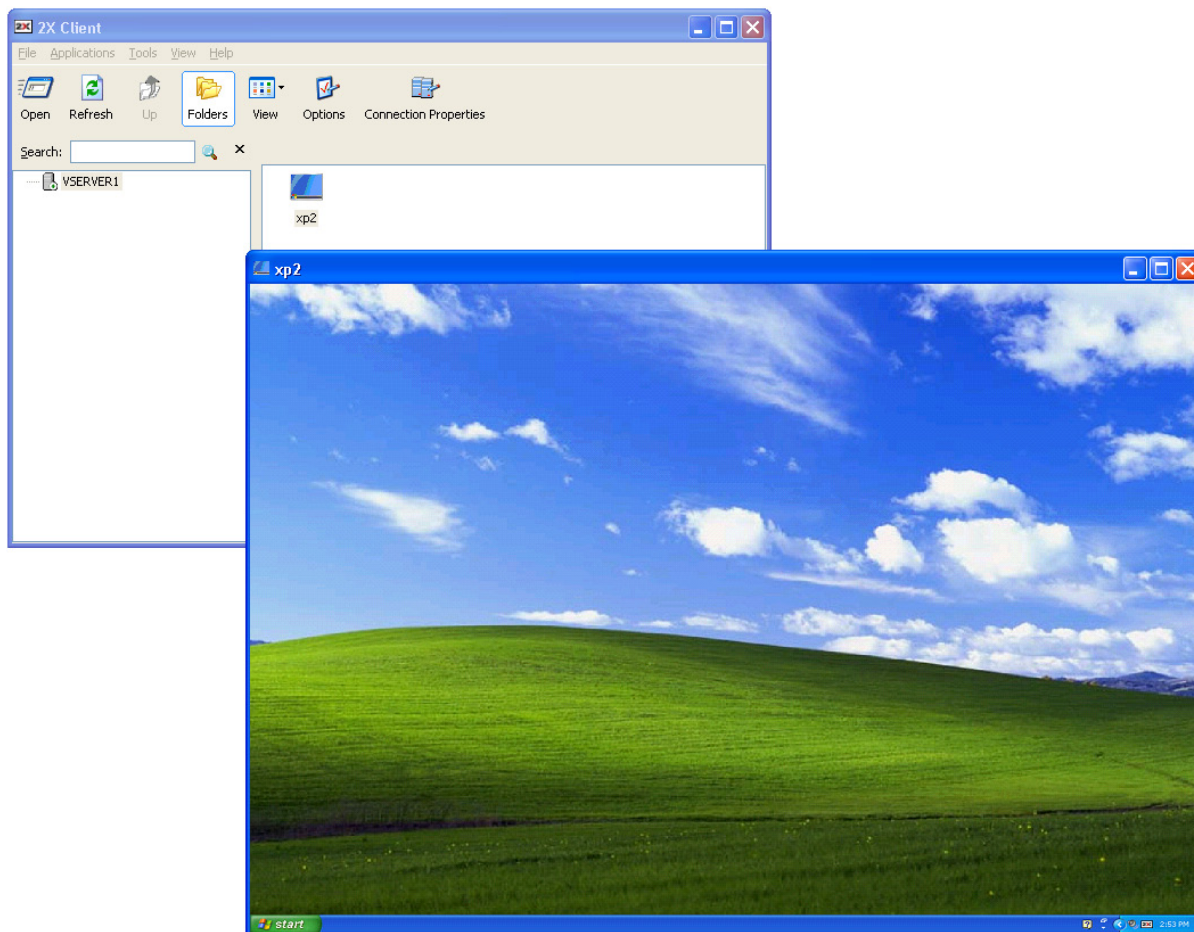


Figure 12: A published virtual desktop launched from 2X Client

Once a new virtual desktop is published using the 2X VirtualDesktopServer Console, the desktop will show up on all the clients with a connection to the 2X VirtualDesktopServer (this depends on special filters set by the administrator). By double clicking on the published virtual desktop, 2X Client will start a connection to the published virtual desktop.